

2

2.1

()

2.2

2.3

2.4

1-1

1-2

2018-2019

%

2018

2018 2020

--	--	--	--	--

			%	
			%	%

4

1-5

5

1-6

1-7

	()				
					%
	%	%	%	%	%
					%

							%	%
							%	%
							%	%
	#	()					%	%
			%	%	%	%	%	%
				%			%	%
	%	%	%	%			%	%
			%				%	%

6

1-8

7

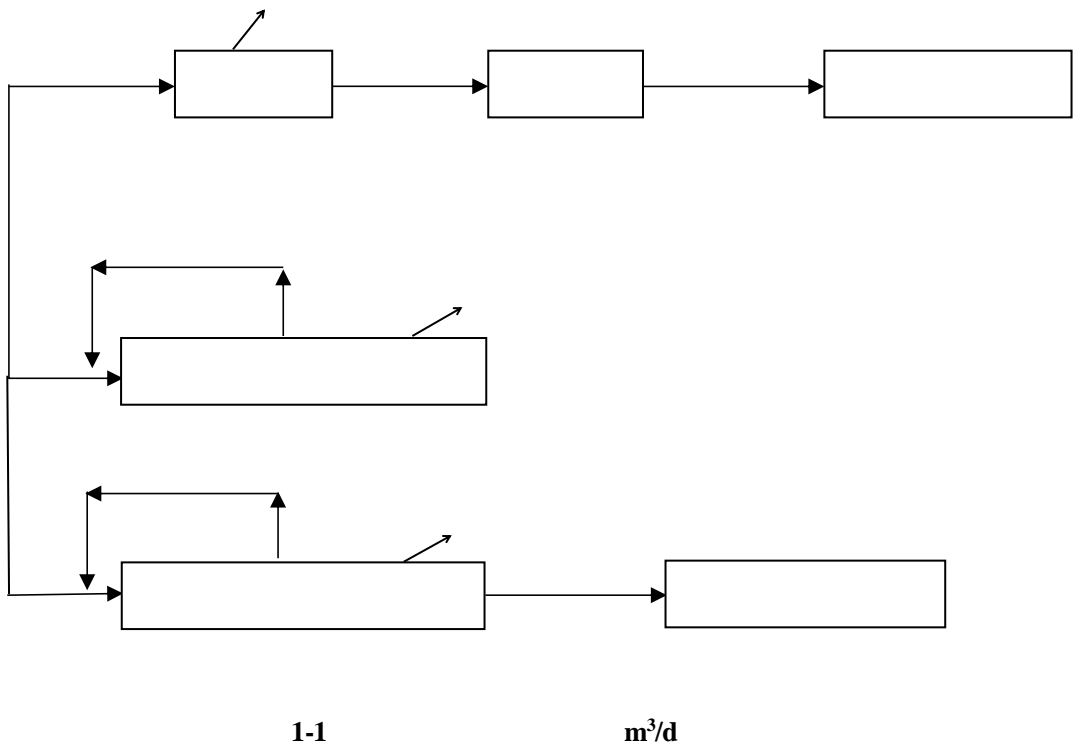
7.1

()

7.2

1-9

			m ³ /d	m ³	%	m ³ /d	m ³ /a	



7.3

7.4

8

1-10

	h/d	h/a	d

9

1

2

3

%

4

()

1

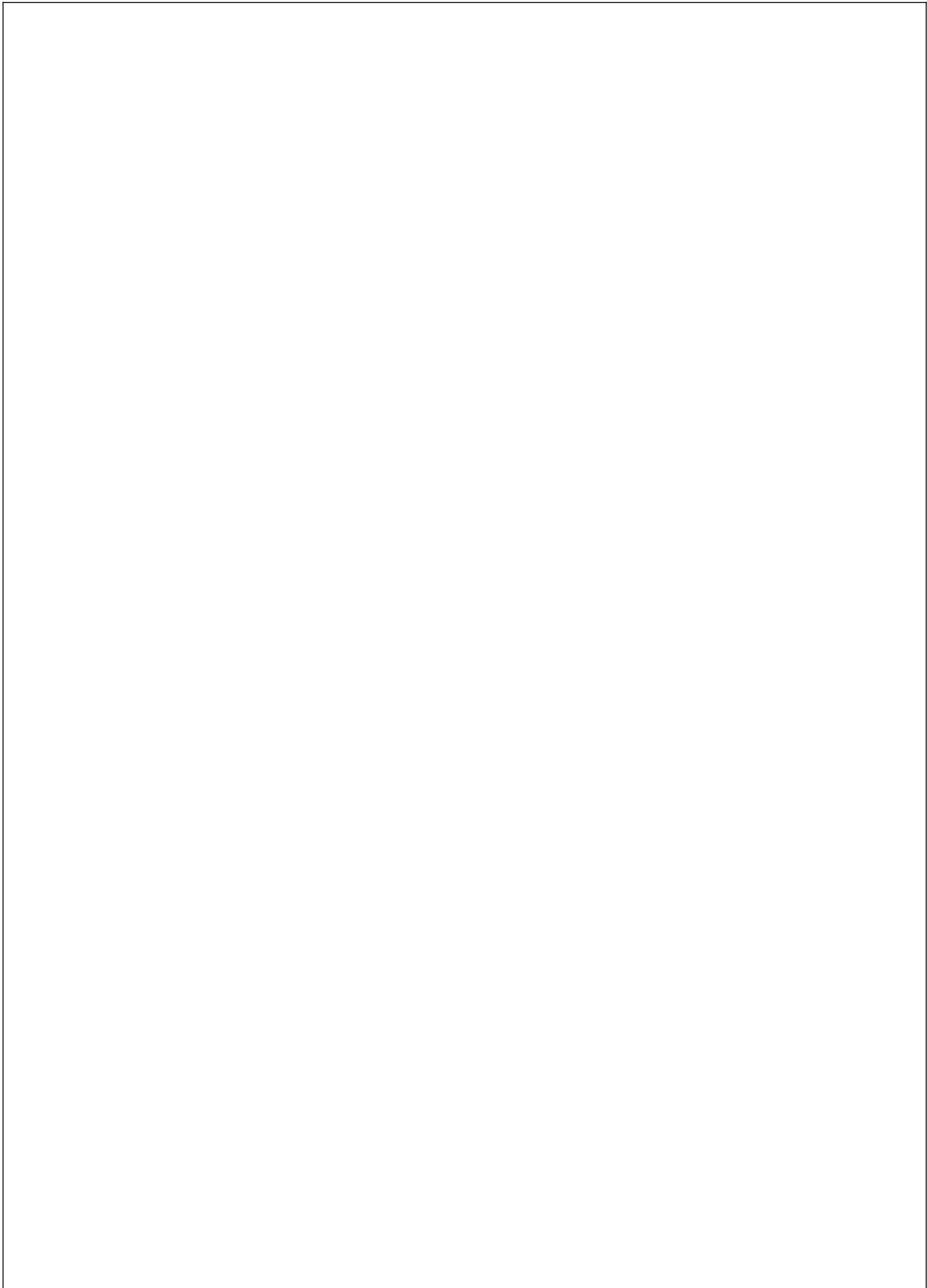
2

%

%

4

5



1

3-1	2018					µg/m³	
	PM_{2.5}	PM₁₀	SO₂	NO₂	CO		O₃

空气质量标准

3-2

		$\mu\text{g}/\text{m}^3$	$\mu\text{g}/\text{m}^3$	%	

)

)

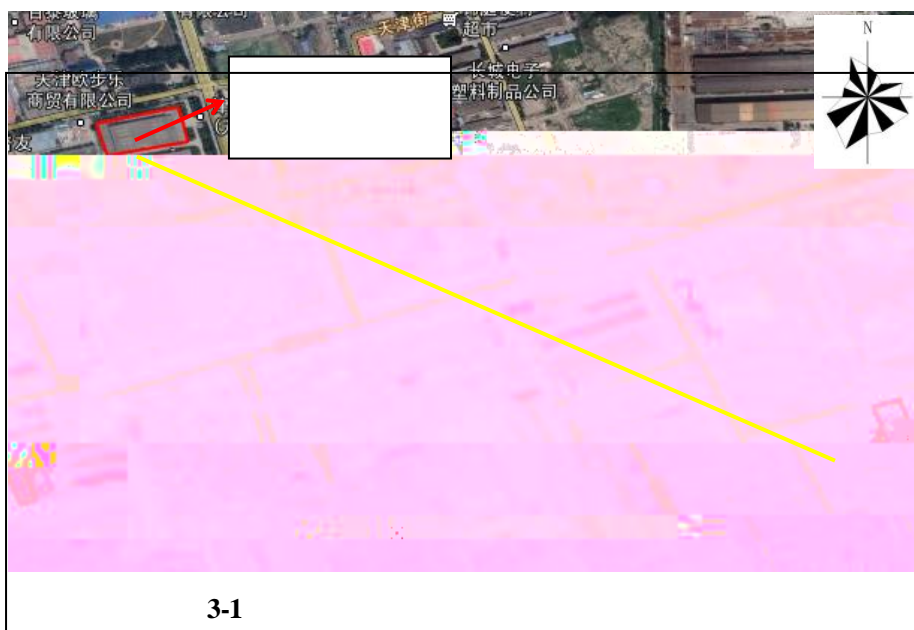
(

3-3

		mg/m ³		

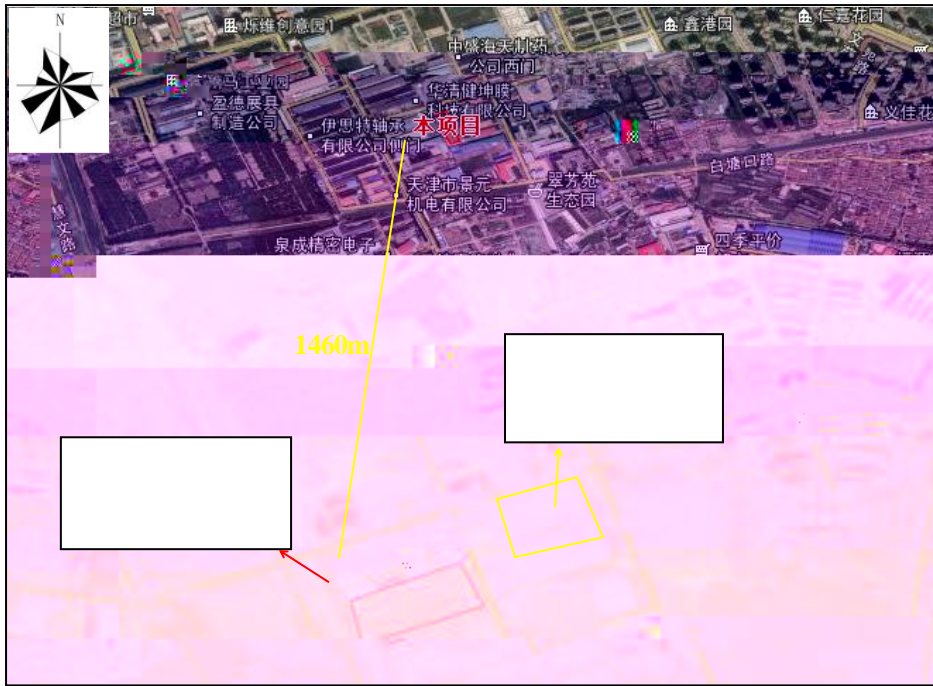
3-4

		mg/m^3		





3-2



3-3

1

4-1

4-7				mg/L pH				
	pH	COD	BOD ₅					
3								
4-8				dB(A)				
4								
5								

1

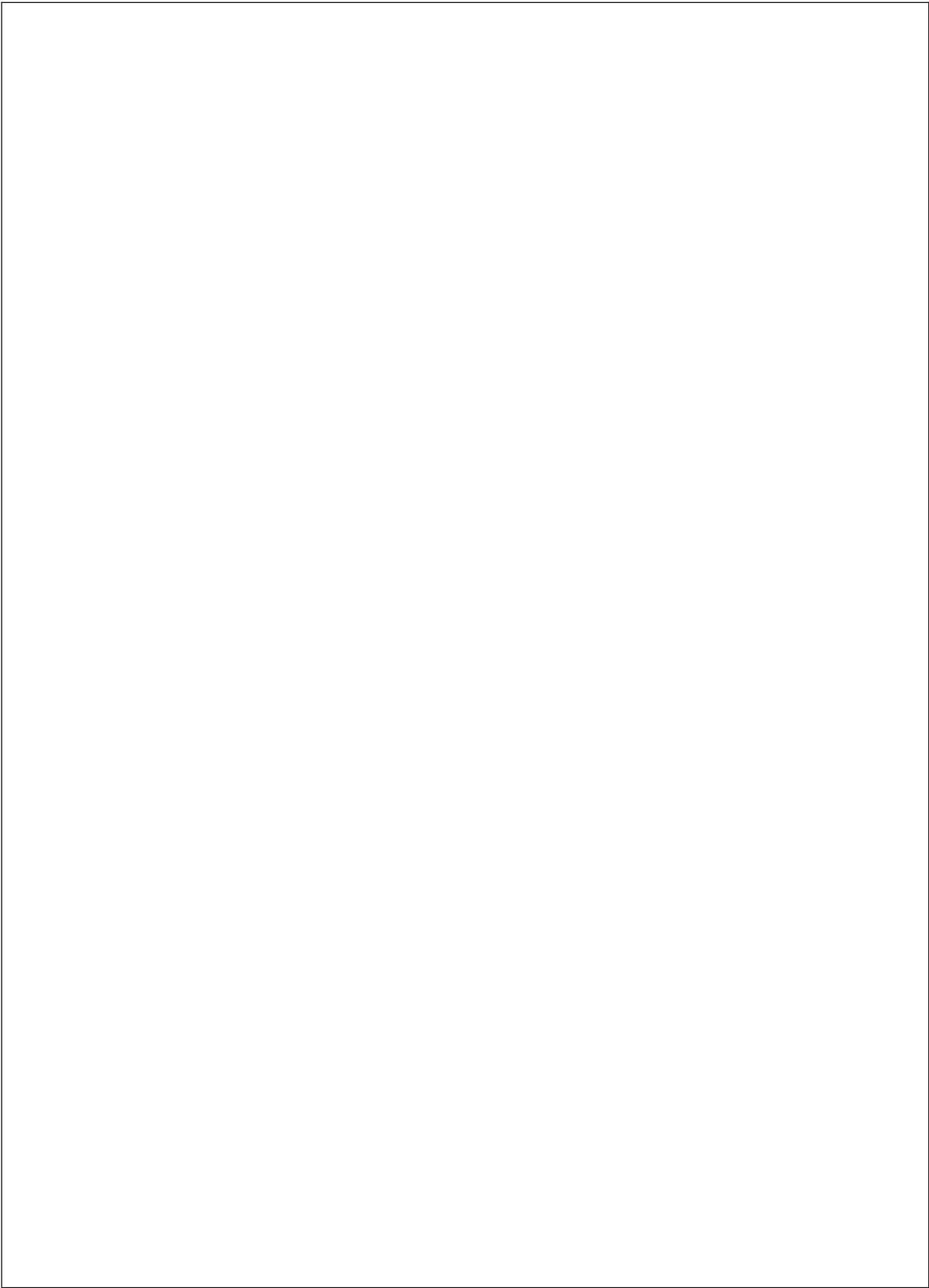
%

2



N© ÂÛĐó"€ÑMj92BE›đ đ R"!•P à
À

@ "P



1

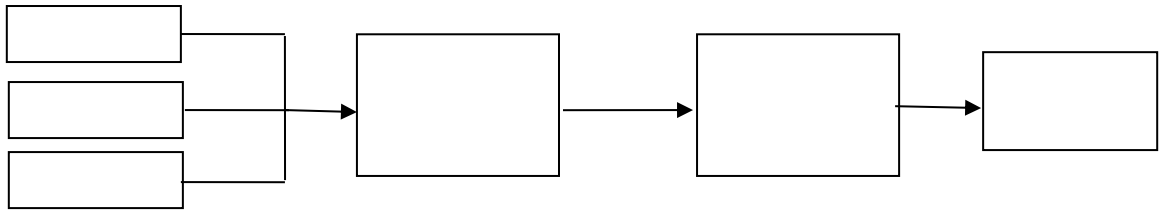
2

5-1

1

2

4



5-2

%

%

%

5-1

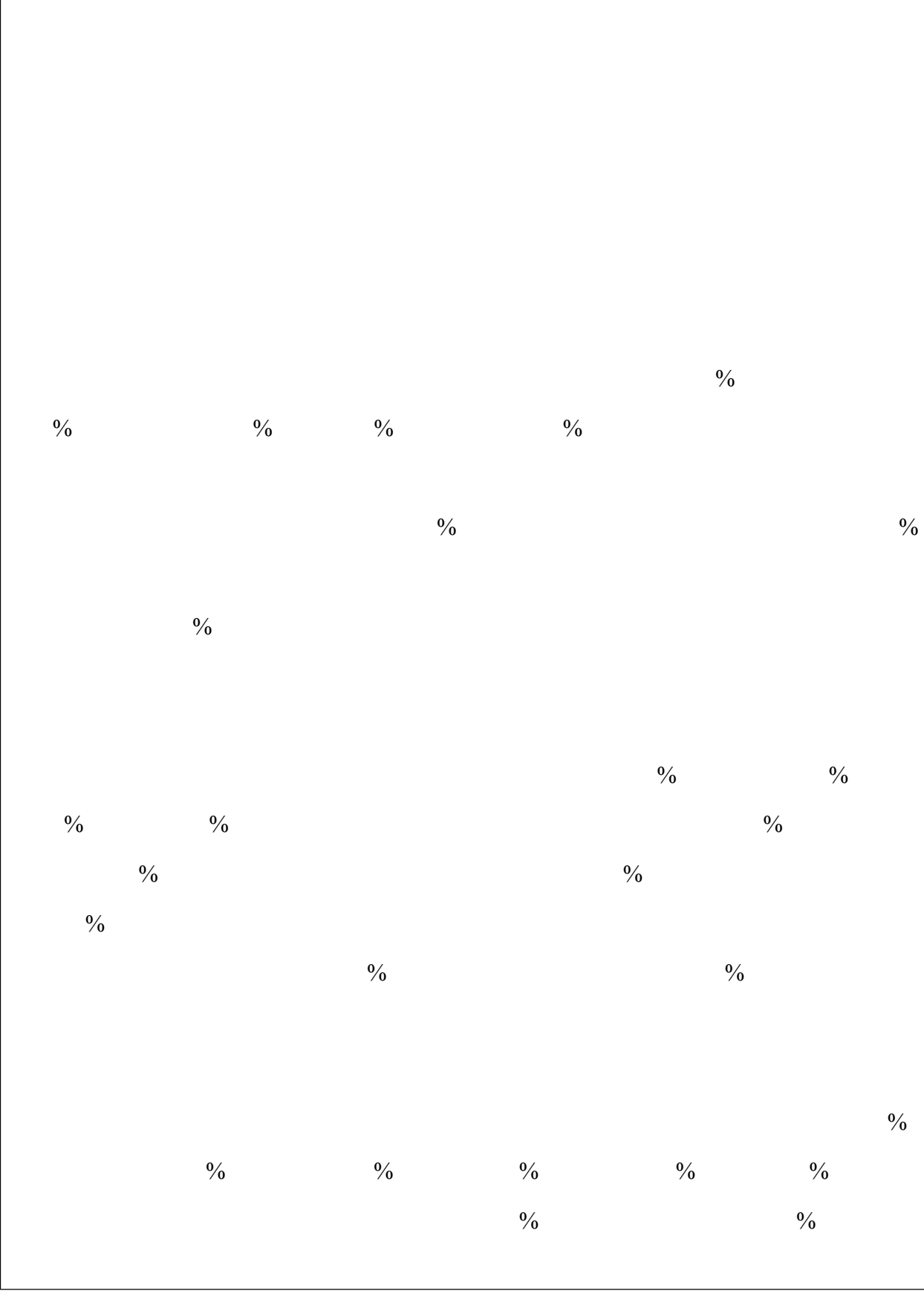
			()	

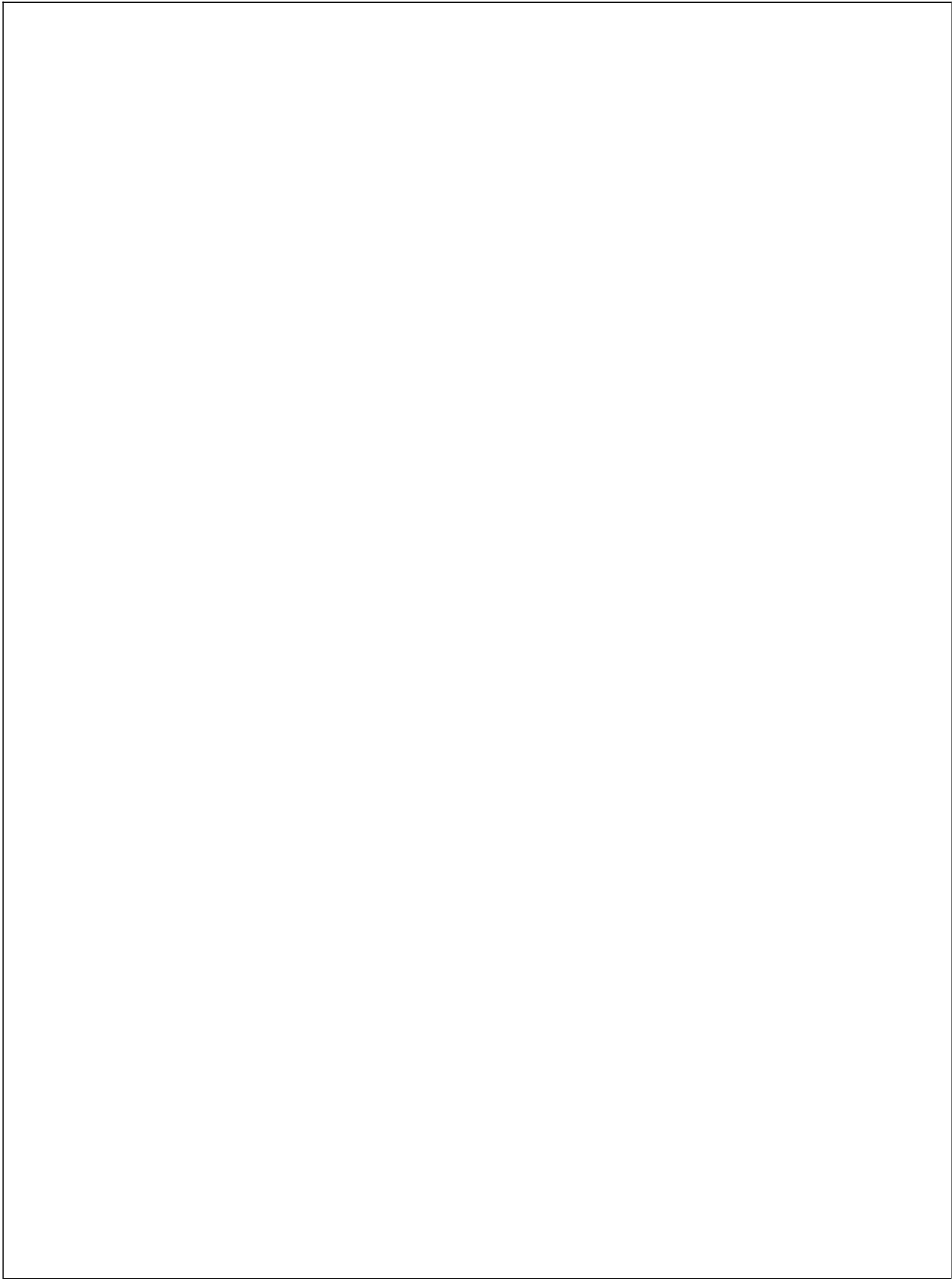
1

%

%

%





1

1

2

%

%

7-1

m (mg/m³) (kg/h) (mg/m³) (kg/h)

%

%

%

4

7-2

			(mg/m ³)	

7-6 AERSCREEN

	P1	VOCs	P1
D m	/	/	/
	$\mu\text{g}/\text{m}^3$	$\mu\text{g}/\text{m}^3$	%

7-9

			mg/m³	(kg/h)	(t/a)

7-10

							/(t/a)
						mg/m³	

7-11

		/(t/a)

		%		%	
			%		%
			%		%
			%		%
		%		%	
		0	0	0	()

2

2.1

2.2

7-12

/(mg/L)

7-15

		dB A			

2

$$= \sum_{=}$$

7-16

		dB A

= - (→)-

()

()

()

()

()

7-17

		m	dB A

()

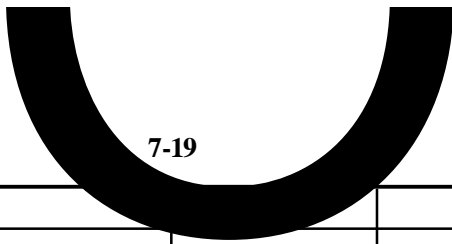
7-18

4

1

2

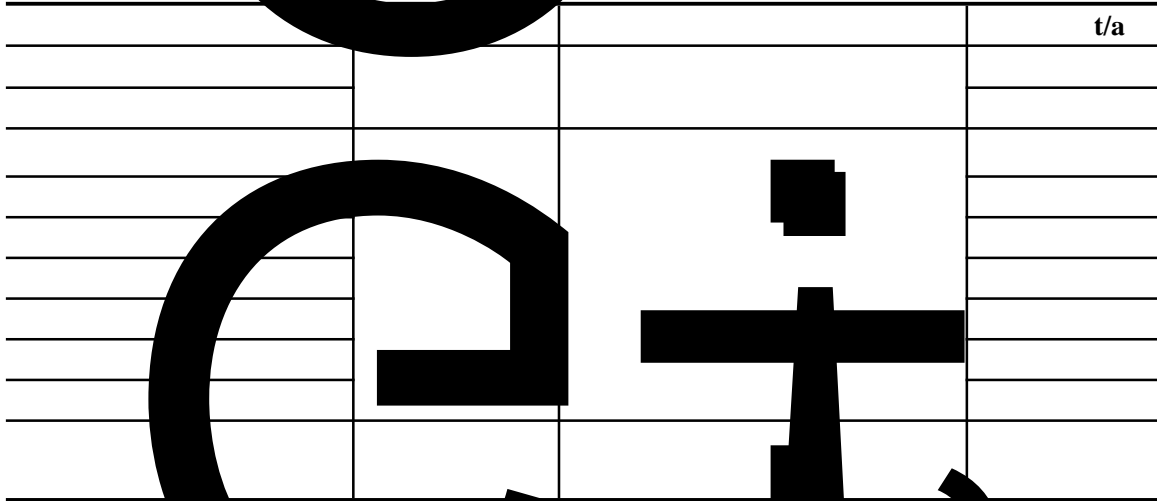
3



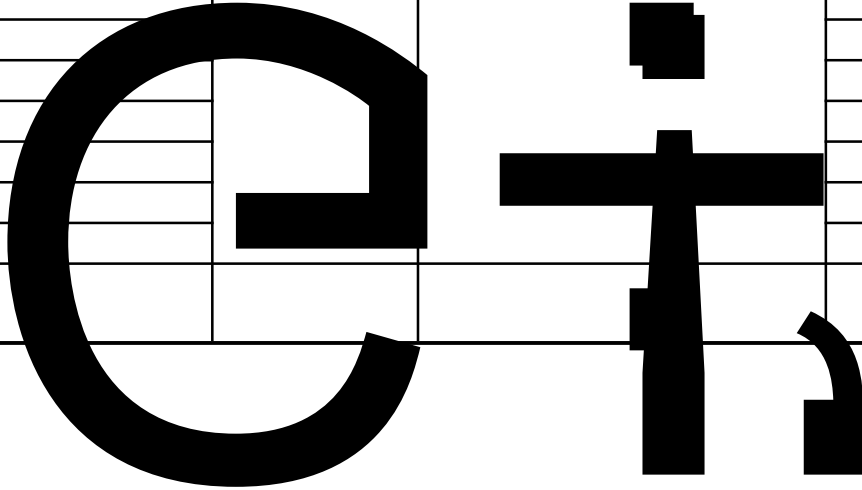
7-19

Ä

t/a



t/a



4

1

3

4

5

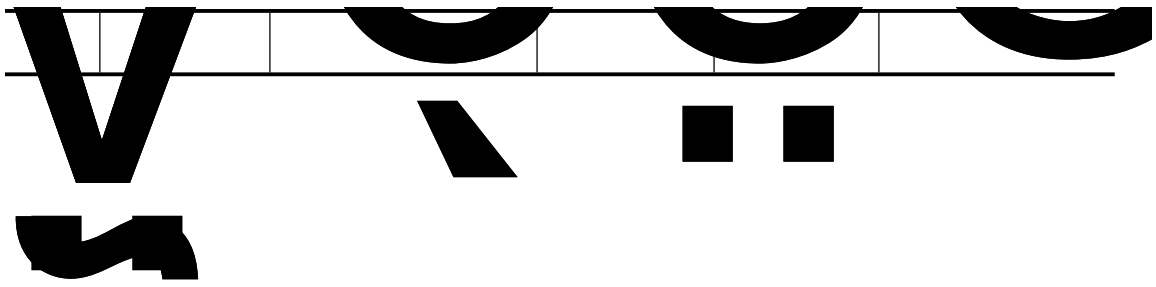
5.1

% %
% % # () % %
% % % % %
% % % % %

7-21

Q

		(t)	(t)	qn/Qn	



	()			
7-24				
7-25				
		CAS 67-63-0		
	%			

7-26

5.3.2

7-27

5.3.3

5.4

1

2

/

5.5

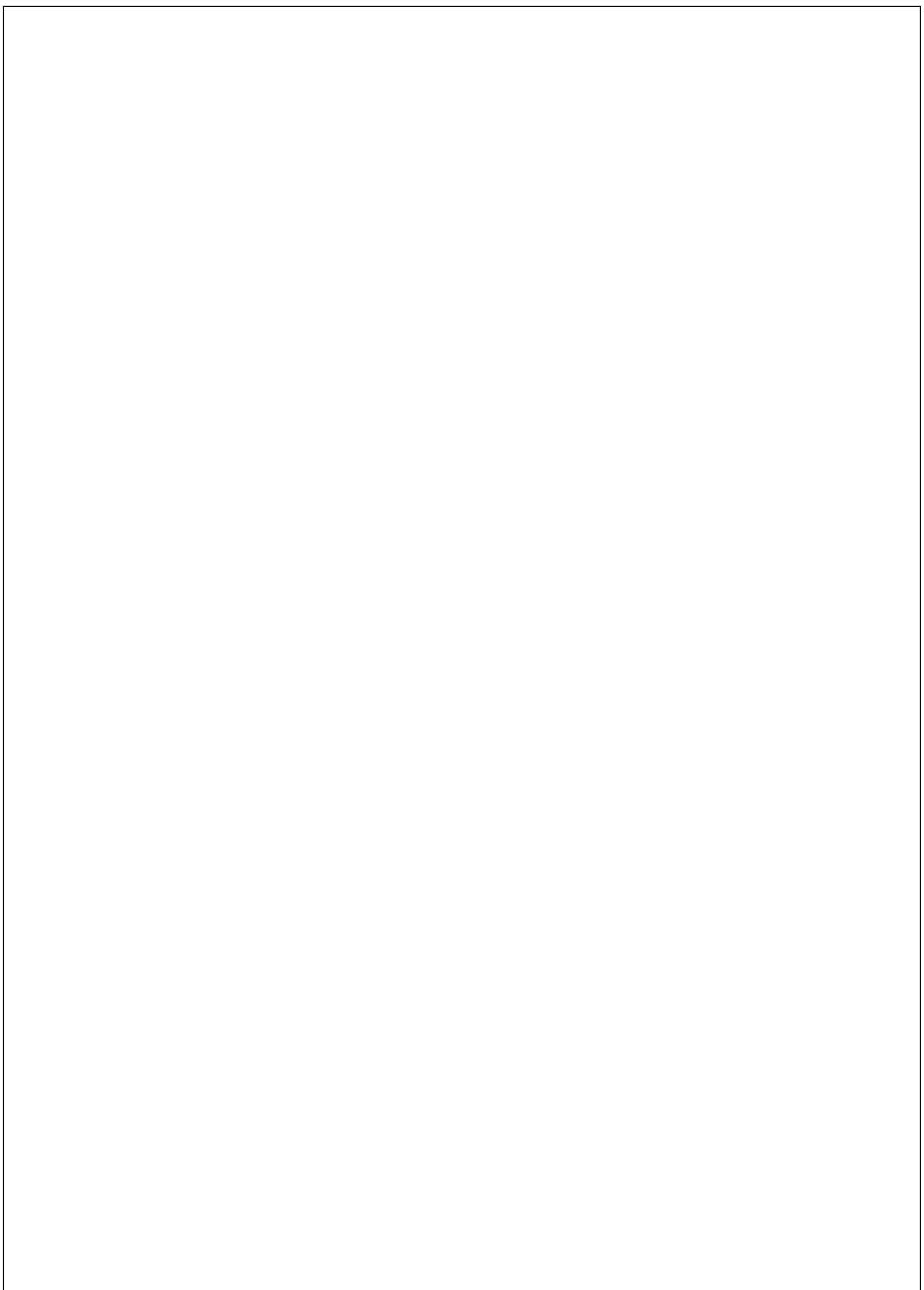
5.5.1

5.5.2

6

7

()



		()			

1

2

()

3

()

6

7

8

%

9

10

11



